

SHOE - AVAILABLE INFILLS

Glass

# SHOE<sup>TM</sup> GLASS RAILING SYSTEM PRODUCT DATA



**VIVA RAILINGS**  
LEADERS IN ARCHITECTURAL RAILING SYSTEMS

DESIGN • ENGINEER • FABRICATE • INSTALL



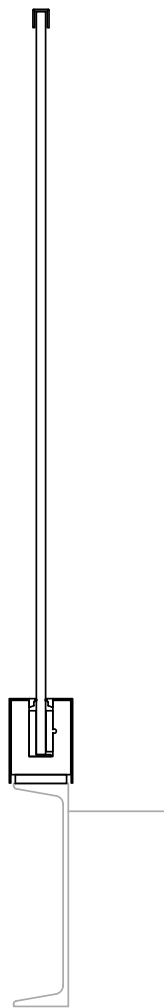
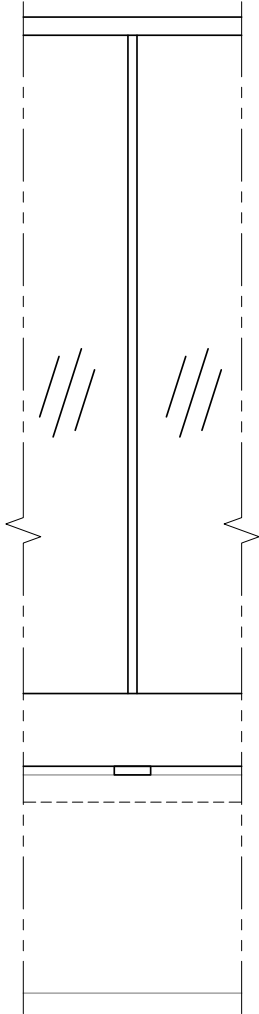
# SHOE™ GLASS RAILING SYSTEM

SHOE - AVAILABLE INFILLS

Glass

Our ICC-ES 4405 Certified SHOE™ Structural Glass Railing System is an aluminum glass railing system with a patented compression set (US Patent No. 9127474) aluminum base shoe system.

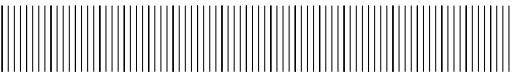
ESR-4405 - ICC Evaluation Service, LLC (ICC-ES)



Other mounting options available.



# SHOE™ GLASS SYSTEM - TECHNICAL DATA



	MATERIAL	FINISH	SIZE/SPACING
BASE	Aluminum SHOE	Mill / Anodized	3.25"x4" SHOE base, 5'-0" max. O.C. glass infill. Fascia or Top mount.
CLADDING	Aluminum - \$ <sup>6</sup>	CeraShield <sup>6</sup>	4.5"x1" Cladding for SHOE only.
	Stainless Steel - \$\$	#6 Satin / CeraShield	
INFILL	Glass	Clear, Digitally Printed, Tinted, Colored and Cast	1/2" to 1" Laminated Tempered Glass <sup>1</sup> PVB or SGP <sup>4</sup> interlayer.
TOP RAIL	Stainless Steel U-Cap	#6 Satin / CeraShield	1" Height U-Cap
	Stainless Steel U-Cap with LED <sup>2</sup>		1" Height U-Cap with LED LINEAR
	Stainless Steel Tube with LED		Ø1-1/2" tube with LED LINEAR
HAND RAIL	Stainless Steel Tube	#6 Satin / CeraShield	Ø1-1/2" or Ø2" tube
	Stainless Steel Tube with LED		Ø1-1/2" with LED linear, Ø1-1/2" or Ø2" with LED Pod
	Wood (Red Oak, Cherry or Maple) <sup>3</sup>	Unstained	Ø2" for Hand Rail
	Wood (Red Oak, Cherry or Maple) with LED		Ø2" with LED LINEAR



1. Thickness and interlayer type typically to be determined based on engineering requirements.
2. All LED LINEAR products are ETL certified; ETL mark is proof of product compliance to North American safety standard.
3. Other species available upon request.
4. Viva Railings recommends using SGP for external applications.
5. CeraShield: Ceramic Coating, Enhanced durability and superior protection. Available in a wide range of colors. (Replaces traditional powder coat finish options.)
6. \$ to \$\$\$: Indicates finish type comparative cost.



- CERTIFIED FOR
- International Building Code (2024)
  - California Building Code (CBC 2019-2022) OSHPD, DSA
  - Florida Building Code – Building (FBC 2020) includes Wind Borne Debris Regions & High-Velocity Hurricane Zone (HVHZ)



# SHOE RAILING SYSTEM

## GLASS INFILL



### AVAILABLE GLASS TYPES



Clear Laminated  
(PVB or SGP)



Tinted



Colored Interlayer



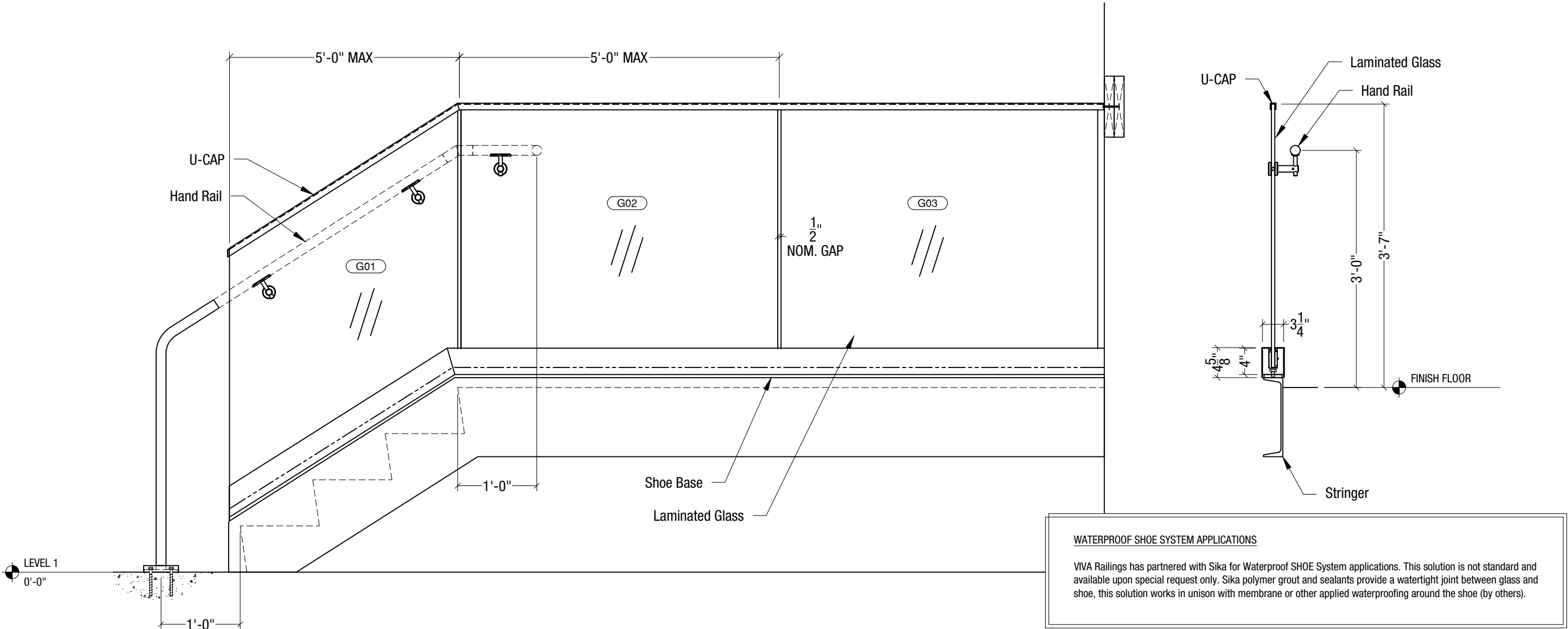
Frosted



Ceramic Frit



Casted

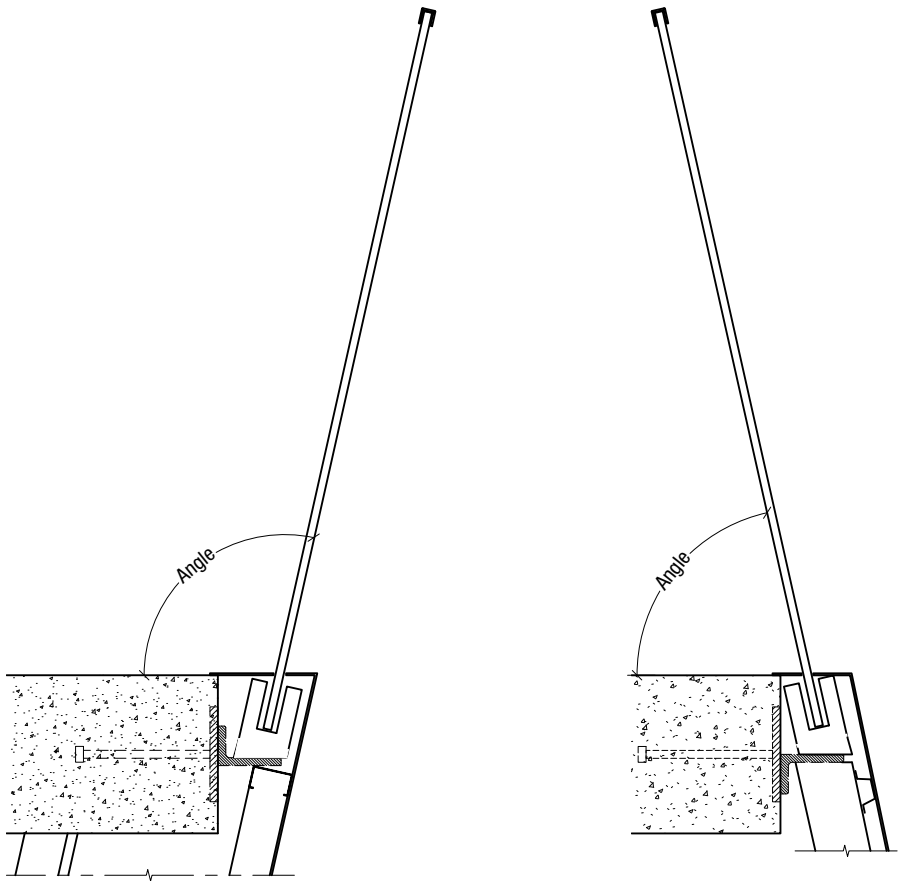


VIVA RAILINGS IS NOT RESPONSIBLE FOR THE STRUCTURAL INTEGRITY OF ANY BUILDING SYSTEMS OR OTHER MATERIALS NOT FURNISHED BY VIVA RAILINGS. VIVA RAILINGS HAS NO WAY OF KNOWING AND SPECIFICALLY DISCLAIMS WHETHER OR NOT THE BUILDING SYSTEMS TO WHICH VIVA RAILINGS' PRODUCTS ARE TO BE ATTACHED ARE STRUCTURALLY SOUND OR DESIGNED TO PROPERLY SUPPORT VIVA RAILINGS'S MATERIALS. ANY SUCH DESIGN RESPONSIBILITY BELONGS TO OTHERS FOR WHOM VIVA RAILINGS IS NOT RESPONSIBLE. THESE DRAWINGS ARE INTENDED FOR THE SOLE USE OF VIVA RAILINGS' CUSTOMER AND THEIR AGENTS FOR THE INSTALLATION OF PRODUCTS FURNISHED BY VIVA RAILINGS. VIVA RAILINGS REMAINS THE SOLE OWNER OF ALL DESIGNS AND INTELLECTUAL PROPERTY CONTAINED WITHIN. REPRODUCTION AND USE OF THESE DESIGNS FOR ANY OTHER PURPOSE IS FORBIDDEN. SCALES ARE PROVIDED FOR REFERENCE ONLY. FOR PRODUCT INFORMATION AND TECHNICAL SUPPORT, PLEASE CONTACT VIVA RAILINGS.



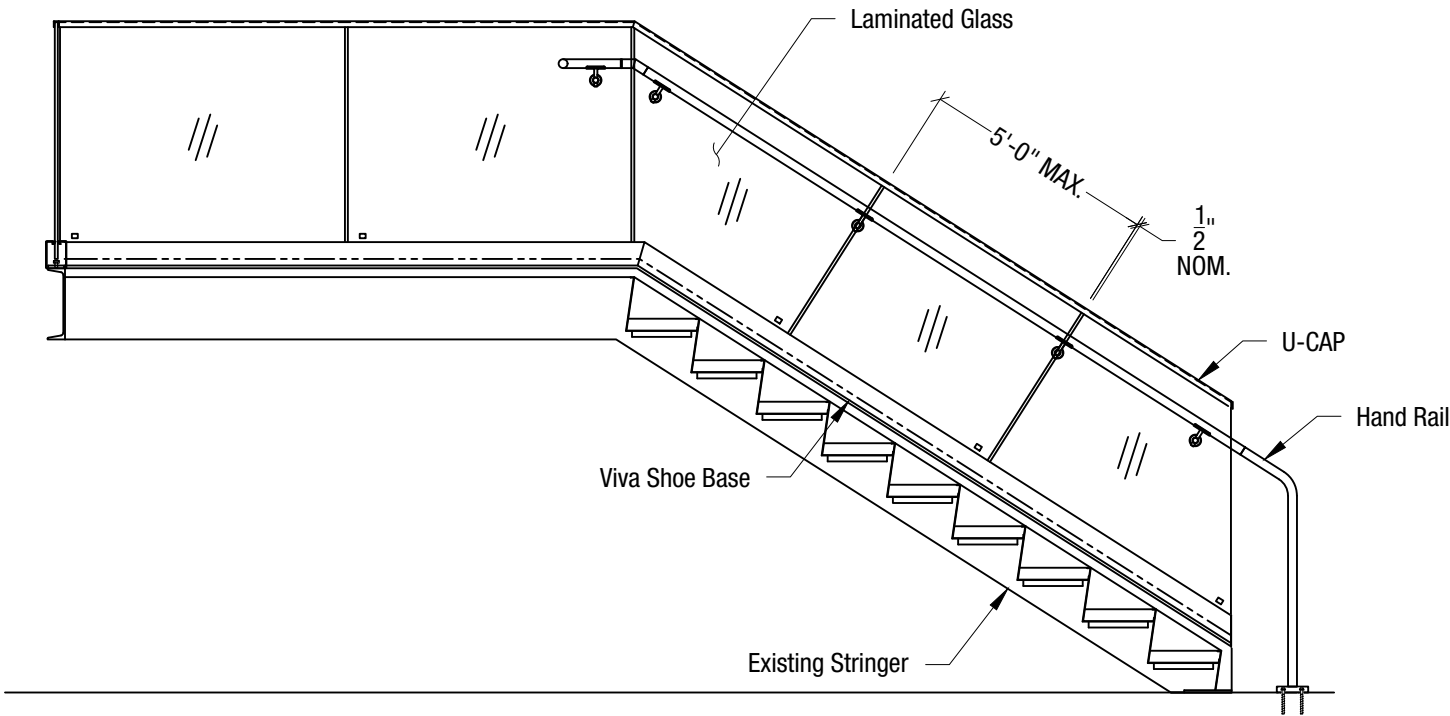
# SHOE RAILING SYSTEM

## ORIENTATION OPTIONS



Obtuse Angle Tilt Shoe

Acute Angle Tilt



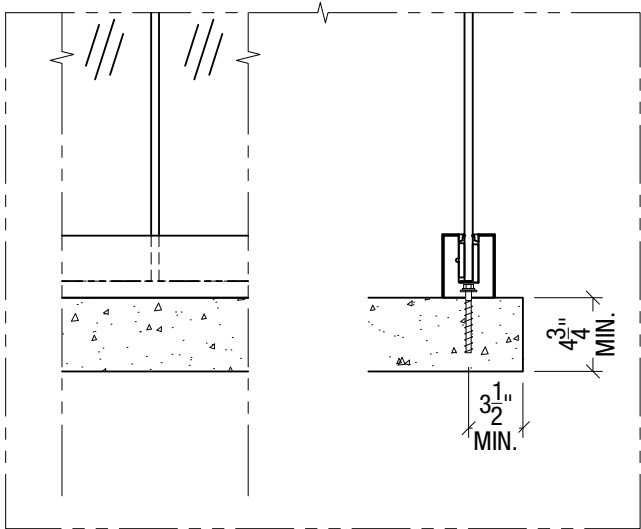
Perpendicular Panels at Stair

VIVA RAILINGS IS NOT RESPONSIBLE FOR THE STRUCTURAL INTEGRITY OF ANY BUILDING SYSTEMS OR OTHER MATERIALS NOT FURNISHED BY VIVA RAILINGS. VIVA RAILINGS HAS NO WAY OF KNOWING AND SPECIFICALLY DISCLAIMS WHETHER OR NOT THE BUILDING SYSTEMS TO WHICH VIVA RAILINGS' PRODUCTS ARE TO BE ATTACHED ARE STRUCTURALLY SOUND OR DESIGNED TO PROPERLY SUPPORT VIVA RAILINGS'S MATERIALS. ANY SUCH DESIGN RESPONSIBILITY BELONGS TO OTHERS FOR WHOM VIVA RAILINGS IS NOT RESPONSIBLE. THESE DRAWINGS ARE INTENDED FOR THE SOLE USE OF VIVA RAILINGS' CUSTOMER AND THEIR AGENTS FOR THE INSTALLATION OF PRODUCTS FURNISHED BY VIVA RAILINGS. VIVA RAILINGS REMAINS THE SOLE OWNER OF ALL DESIGNS AND INTELLECTUAL PROPERTY CONTAINED WITHIN. REPRODUCTION AND USE OF THESE DESIGNS FOR ANY OTHER PURPOSE IS FORBIDDEN. SCALES ARE PROVIDED FOR REFERENCE ONLY. FOR PRODUCT INFORMATION AND TECHNICAL SUPPORT, PLEASE CONTACT VIVA RAILINGS.

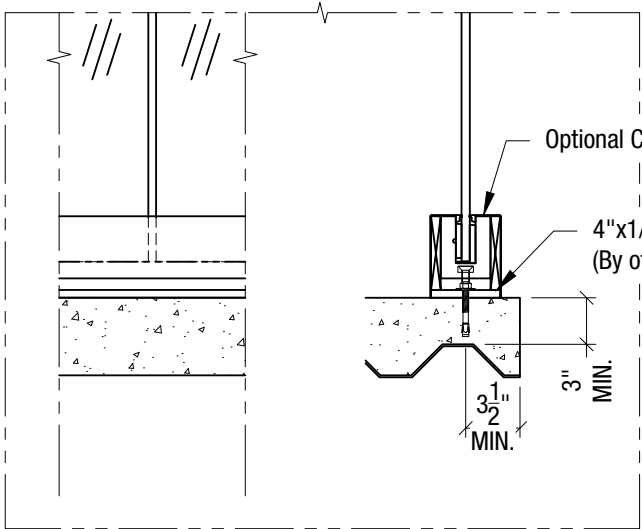


# SHOE RAILING SYSTEM

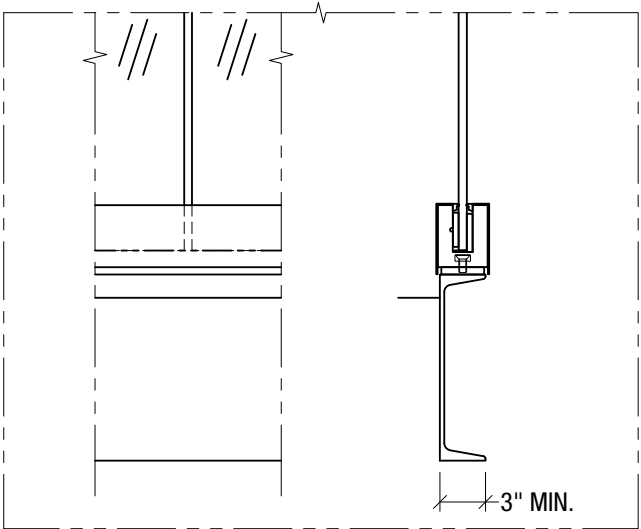
## MOUNTING CONDITION, TOP MOUNTED POST



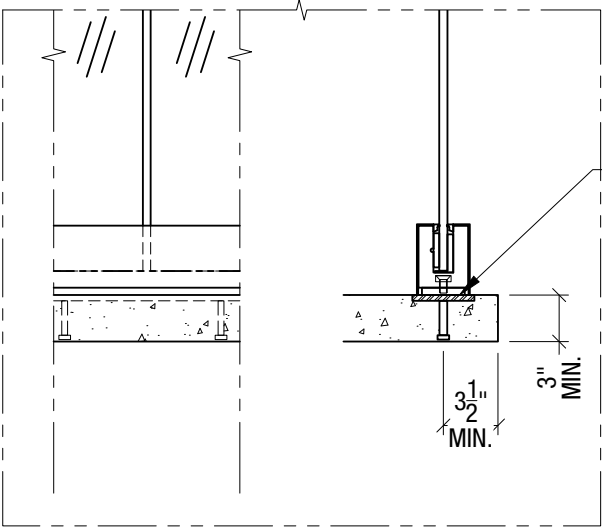
Anchored to Concrete <sup>1</sup> - \$ <sup>2</sup>  
Detail# SH-T01 <sup>3</sup>



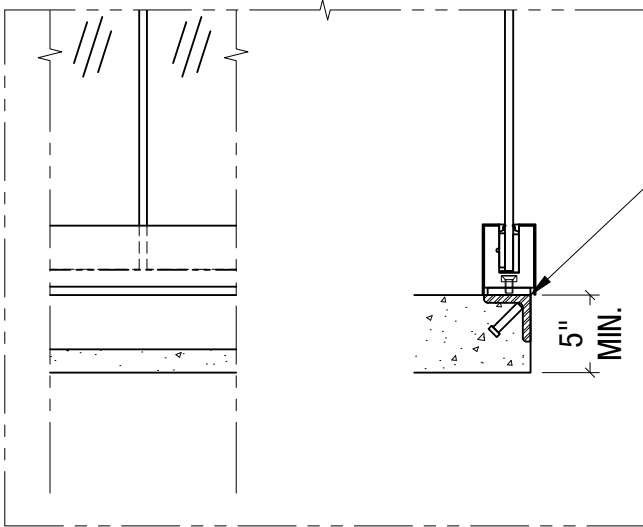
Anchored to Concrete Slab on Deck - \$\$\$  
Detail# SH-T02



Welded @ Steel Channel - \$  
Detail# SH-T03



Welded @ Embed Plate - \$  
Detail# SH-T04



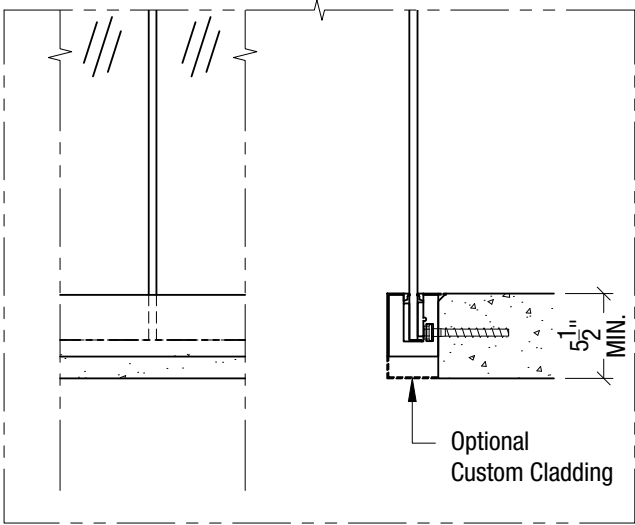
Welded @ Embed Angle - \$\$\$  
Detail# SH-T05

(1) Min. 4000 PSI concrete, Typ.  
(2) \$ to \$\$\$: Indicates mounting type comparative cost

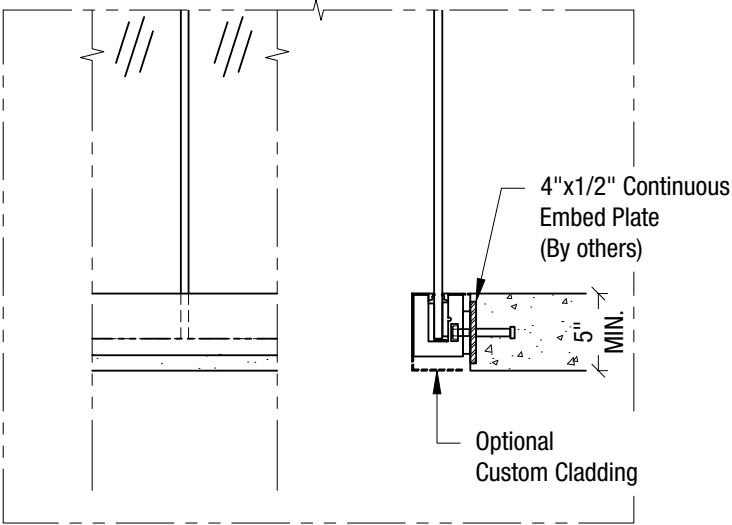


# SHOE RAILING SYSTEM

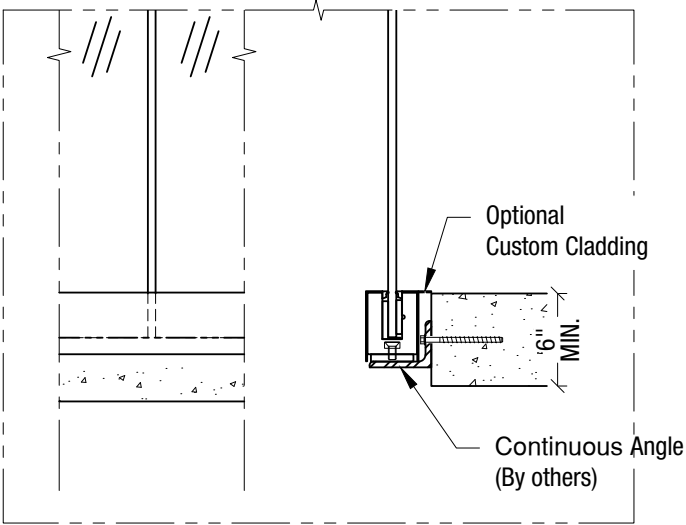
## MOUNTING CONDITION, FASCIA MOUNTED POST



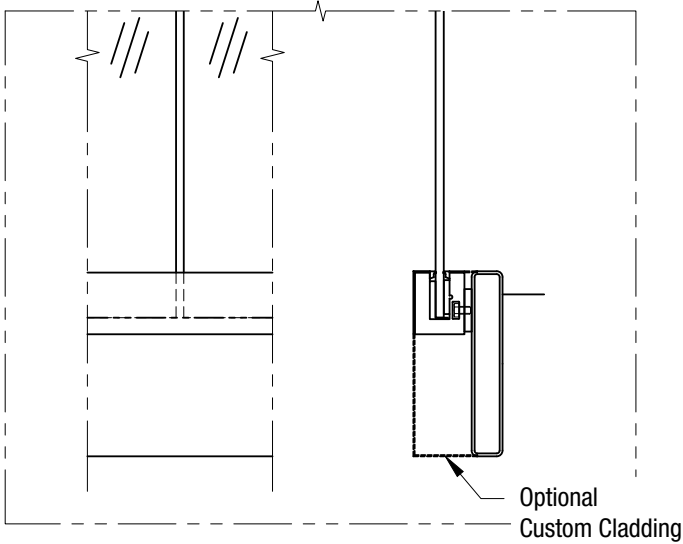
Anchored to Concrete <sup>1</sup> - \$\$\$  
Detail# SH-F01



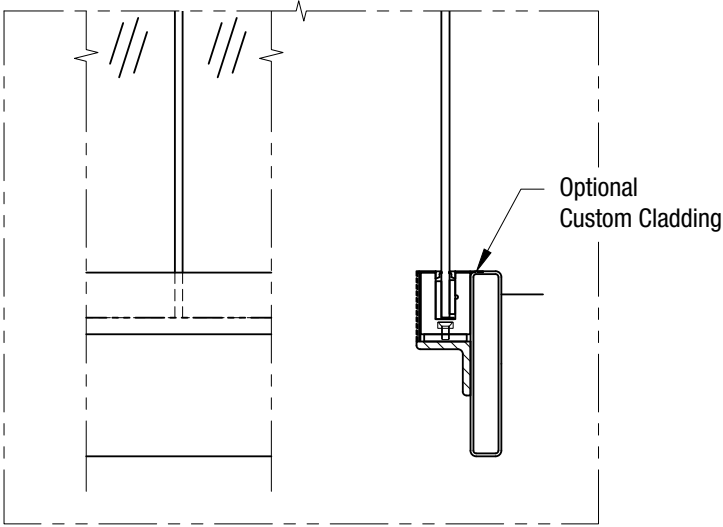
Welded @ Embed Plate - \$\$  
Detail# SH-F02



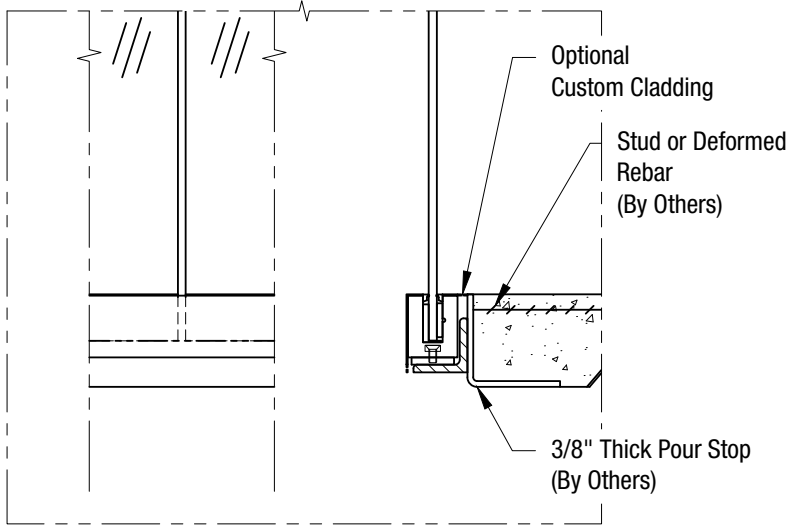
Welded @ Steel Angle Anchored @  
Concrete - \$\$  
Detail# SH-F03



Welded @ Steel Tube - \$\$  
Detail# SH-F04



Welded @ Steel Angle Welded  
@ Steel Tube - \$\$  
Detail# SH-F05



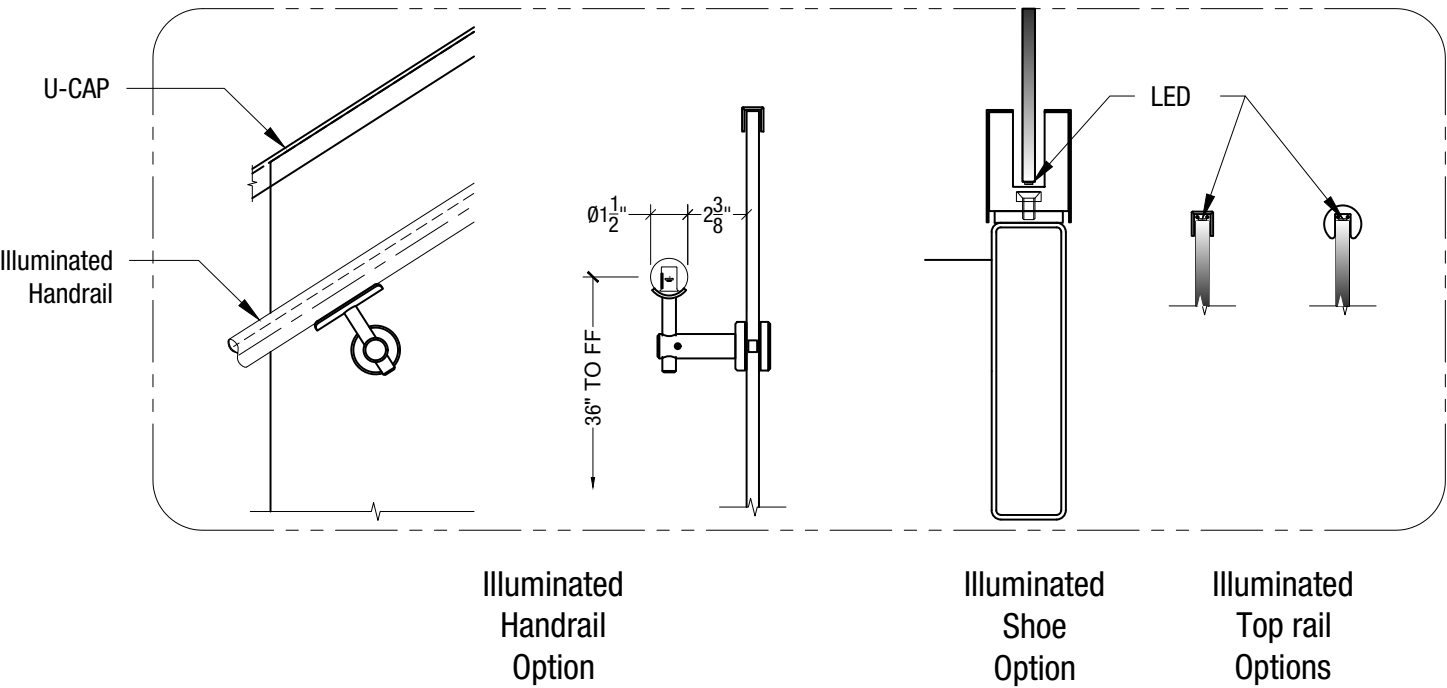
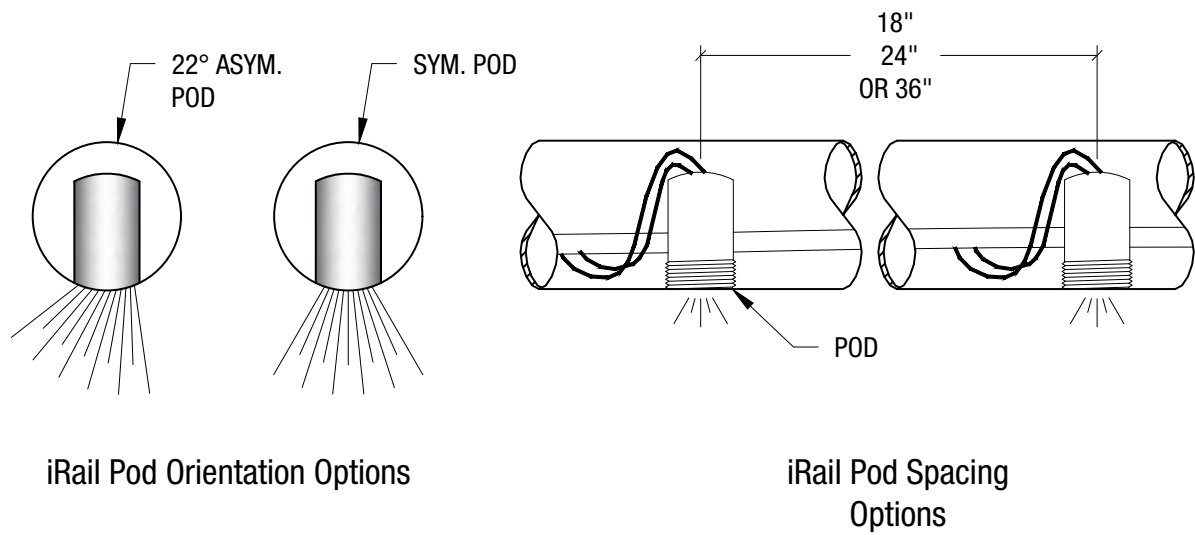
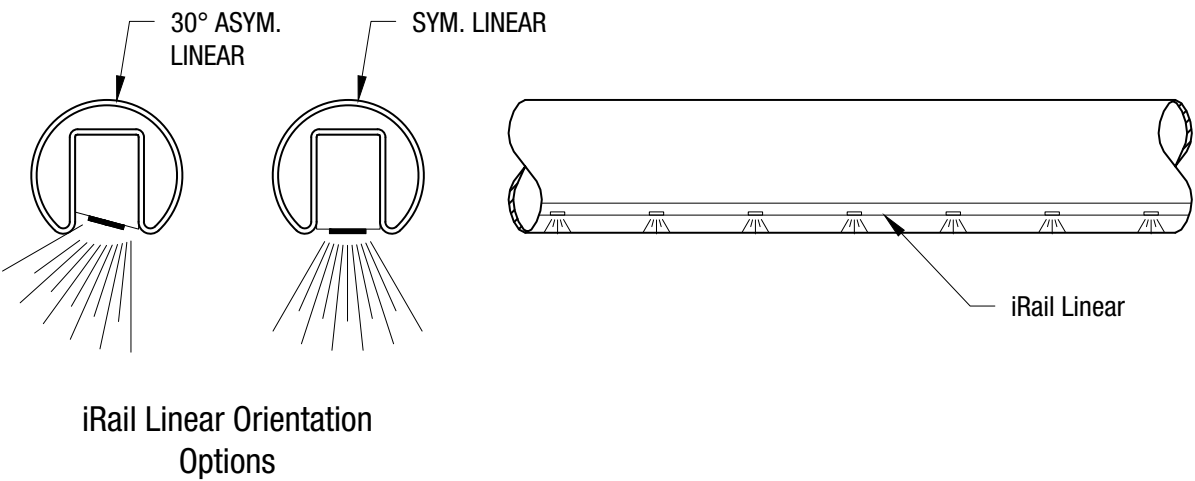
Welded @ Steel Angle - \$\$  
Detail# SH-F07

(1) Min. 4000 PSI concrete, Typ.



# SHOE RAILING SYSTEM

## ILLUMINATED RAILING



iRAIL LIGHTED RAILING SYSTEM





# SHOE GLASS RAILING SYSTEM



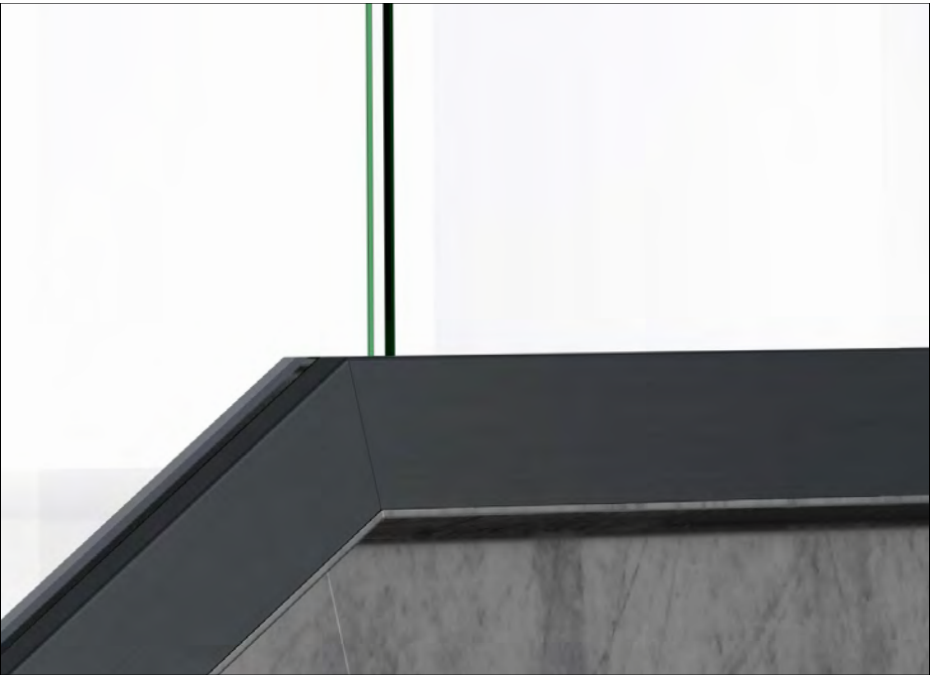
# SHOE RAILING SYSTEM

## FINISHING OPTIONS

#6 Satin



CeraShield\* Ceramic Coating



Enhanced durability and superior protection.  
Available in a wide range of colors.  
(Replaces traditional powder coat finish options.)

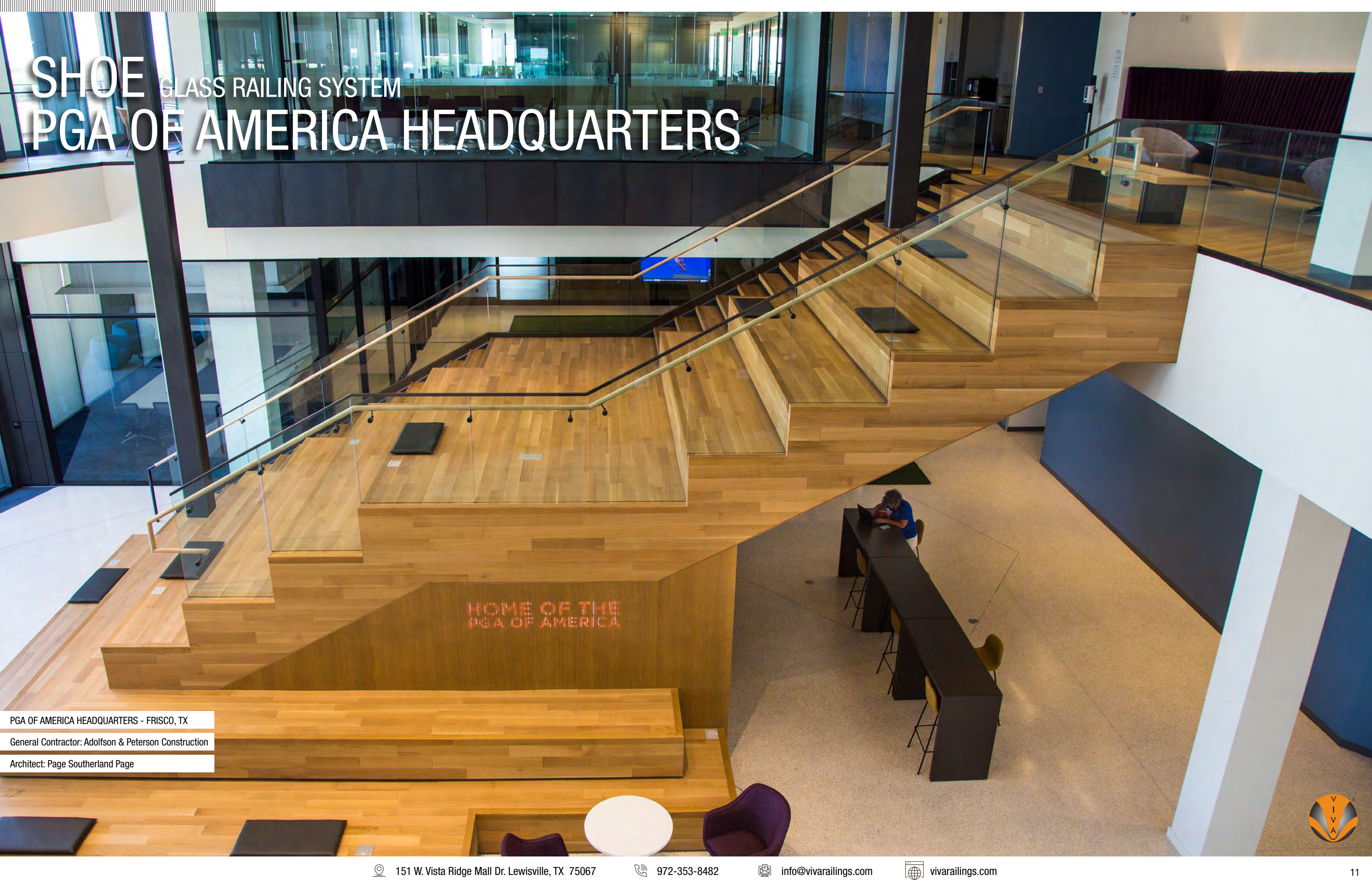
\*VIVA Railings now proudly offers CERASHIELD Ceramic Coating (powered by CERAKOTE Technology) as our premium finishing option, providing enhanced durability and superior protection for interior and exterior applications. While CERASHIELD offers unparalleled advantages in hardness, corrosion resistance, UV stability, and chemical resistance, we will continue to offer standard Powder Coat finishes to meet a variety of aesthetic preferences.



[CERASHIELD FINISHING OPTIONS](#)







# SHOE GLASS RAILING SYSTEM PGA OF AMERICA HEADQUARTERS

HOME OF THE  
PGA OF AMERICA

PGA OF AMERICA HEADQUARTERS - FRISCO, TX  
General Contractor: Adolfson & Peterson Construction  
Architect: Page Southerland Page





# SHOE GLASS RAILING SYSTEM HALL ARTS HOTEL

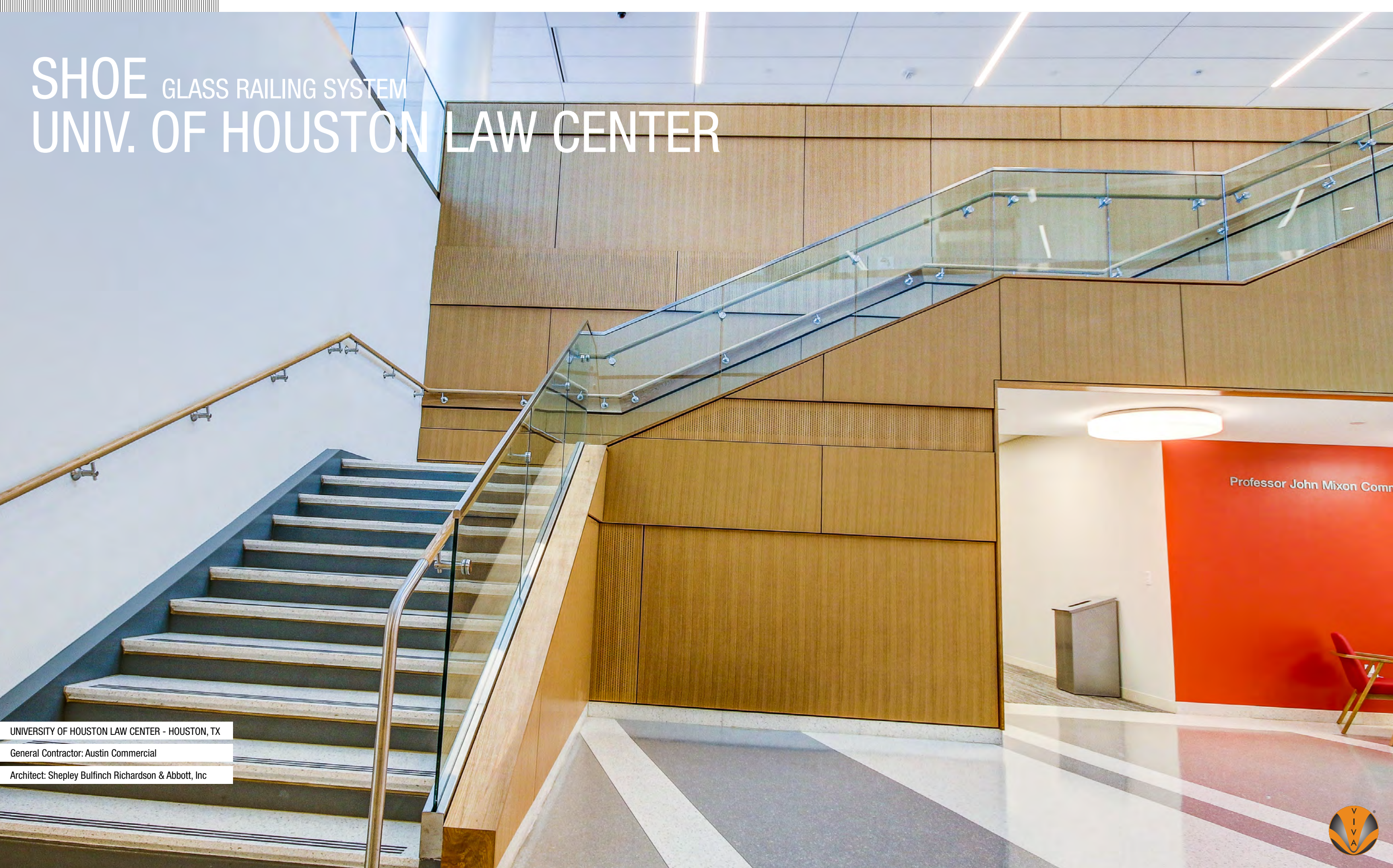


HALL ARTS HOTEL - DALLAS, TX  
General Contractor: Austin Commercial  
Architect: HKS





# SHOE GLASS RAILING SYSTEM UNIV. OF HOUSTON LAW CENTER



UNIVERSITY OF HOUSTON LAW CENTER - HOUSTON, TX  
General Contractor: Austin Commercial  
Architect: Shepley Bulfinch Richardson & Abbott, Inc





# SHOE GLASS RAILING SYSTEM SMU FRANCES ANNE MOODY HALL

SMU FRANCES ANNE MOODY HALL - DALLAS, TX  
General Contractor: Beck Group  
Architect: Smithgroup, Inc.





# SHOE GLASS RAILING SYSTEM CSU WATER RESOURCES CENTER

CSU WATER RESOURCES CENTER - FT. COLLINS, CO

General Contractor: ISEC

Architect: Hord Coplan Macht







**DESIGN + ENGINEER + FABRICATE + INSTALL**

**151 W. Vista Ridge Mall Dr. Lewisville, TX 75067**

(Dallas/Fort Worth Metroplex)

PH: 972.353.8482 | [info@vivarailings.com](mailto:info@vivarailings.com)  
[vivarailings.com](http://vivarailings.com)



Inc. Magazine 500 | 5000  
VIVA RAILINGS, LLC.  
Among The Fastest Growing  
US Companies  
Eight Years in a Row  
**2012-2019**



Inc. Magazine 500 | 5000  
VIVA RAILINGS, LLC.  
Among The Fastest Growing  
Texas Companies  
**#211**



ICC-ES 4405 Certified  
**SHOE™**  
Structural Glass Railing System



LEED  
Material & Resources Credits 4.1 and 4.2



The American Institute of Architects



The California Contractors State License  
Board Certified