



SUN CONTROL SYSTEMS

Shade Systems Engineered for Comfort and Endurance

METAL
SPACES
A division of Viva Railings, LLC.



VIVA RAILINGS
LEADERS IN ARCHITECTURAL RAILING SYSTEMS



System Overview



**Engineered sun control and shade systems:
Sunshades and Fins**



CSI Division: 10 10700 – Sun Control Systems



Delivery Model: Turnkey (primary) or supply-only

Building-attached sun control engineered for façade integration. Brow Type horizontal sunshades, Vertical Type fins, and Shadow Box window surrounds, delivering solar performance and design impact across exterior envelopes.



APPLICATIONS



Horizontal sunshades: solar control over windows, storefronts, and entries



Vertical fin systems: Facade solar management on commercial and institutional buildings



Shadow Box window surrounds: three-sided framed openings creating depth, shading, and facade rhythm



Branded facade accents: custom patterns integrated with building identity



ESG/LEED-driven envelopes: energy efficiency and occupant comfort strategies



KEY FEATURES

- **Three Profile Types:** Brow, Vertical, and Shadow Box configurations to suit any facade strategy
- **Pre-Engineered Mounting:** Field-proven attachment to framing, steel, and concrete substrates
- **Design Flexibility:** Standard pattern library, custom laser-cut patterns, or solid panels
- **Material & Finish Range:** Aluminum and Steel options with AAMA-rated coatings for long-term performance
- **Turnkey Delivery:** Single-source design, engineering, fabrication, and optional installation



SUN CONTROL SYSTEM TYPE	STANDARD DIMENSIONS W x H (in)		PANEL MATERIAL	FINISH
	W	H		
BROW (TYPE B)	12	36	Aluminum 1/8"	Powder Coat (AAMA 2604) ² PVDF (AAMA 2605) ¹
	24	48		
VERTICAL (TYPE V)	36	60	Steel 14 GA Steel 11 GA	Zinc Rich Primer + Powder Coat Mill Finish (paint by others)
		72		
SHADOW BOX (TYPE SB)	12	42	Aluminum 1/8"	Powder Coat (AAMA 2604) ² PVDF (AAMA 2605) ¹
	18	54		
	24	66		
		90		
		114		
		120		

(1) Available as an Upgrade

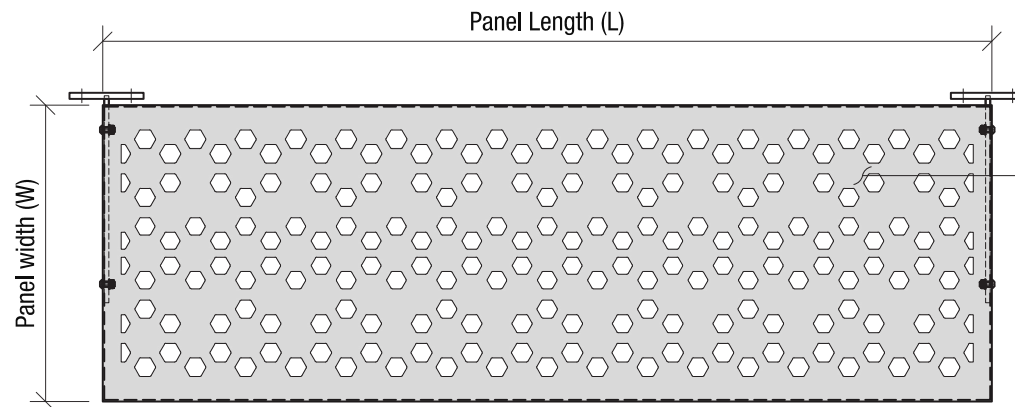
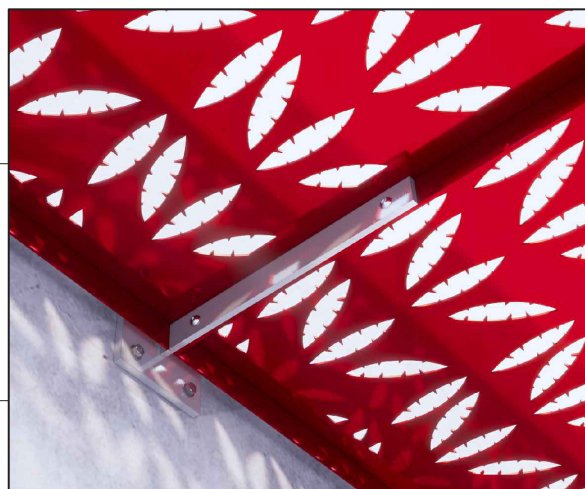
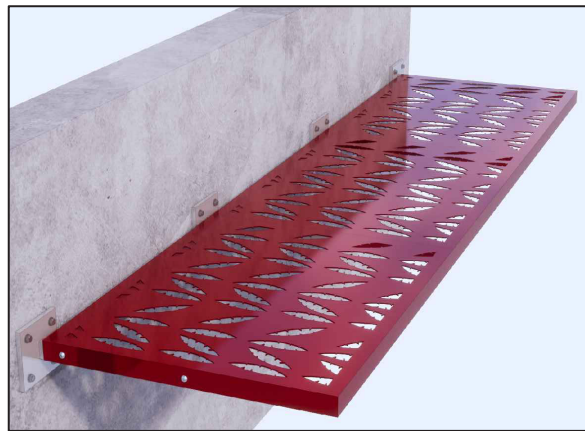
(2) \$ to \$\$\$: Indicates finish type comparative cost.



ARLINGTON ISD WEBB ELEMENTARY
 General Contractor: Lee Lewis Construction
 Architect: BRW Architects



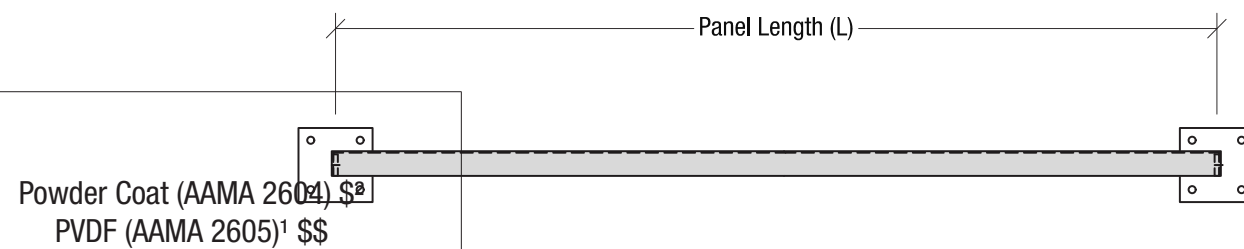
Brow Type



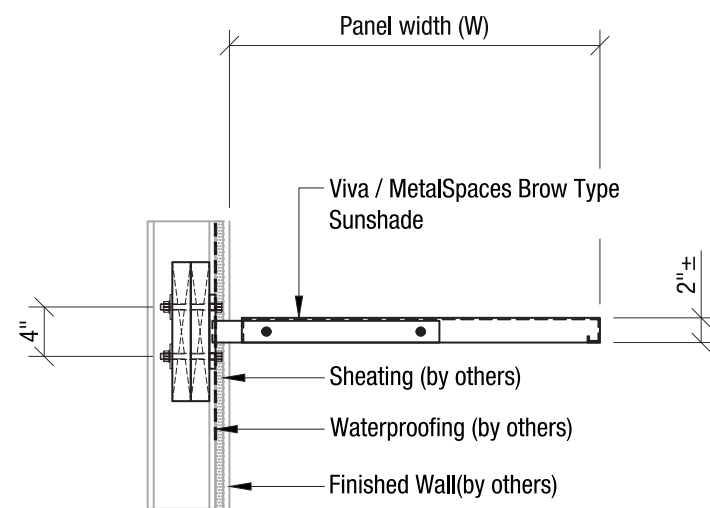
PLAN VIEW

Visit <https://vivarailings.com/> for range of design patterns
Or provide your custom pattern.
Solid panels also available.

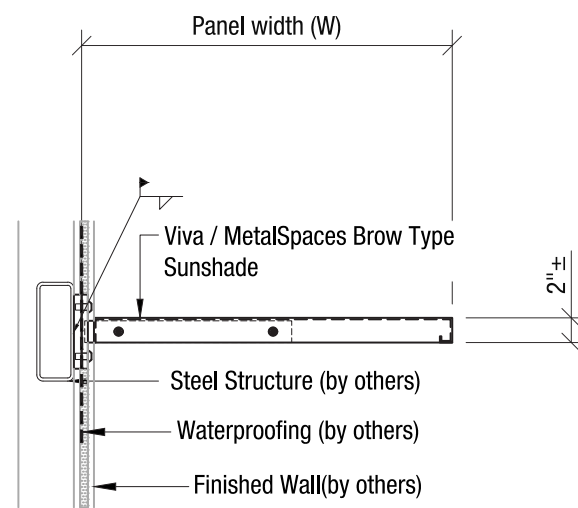
STANDARD DIMENSIONS WxL (in)	
	36
12	48
24	60
	72
36	36
	48



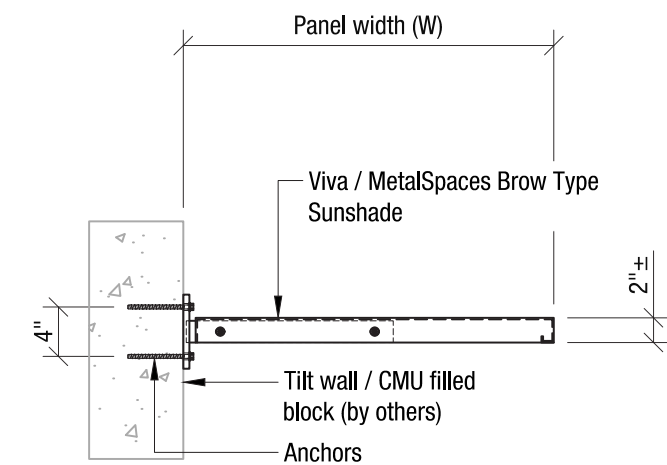
FRONT VIEW



B1 - TO FRAMING



B2 - TO STEEL

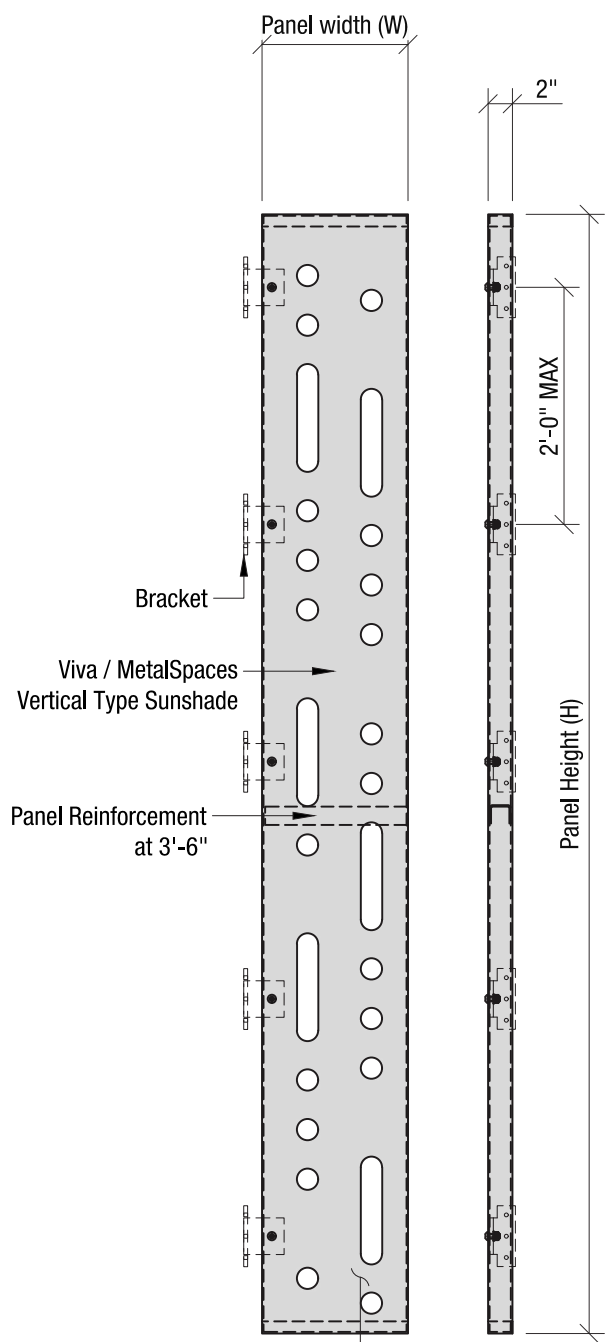
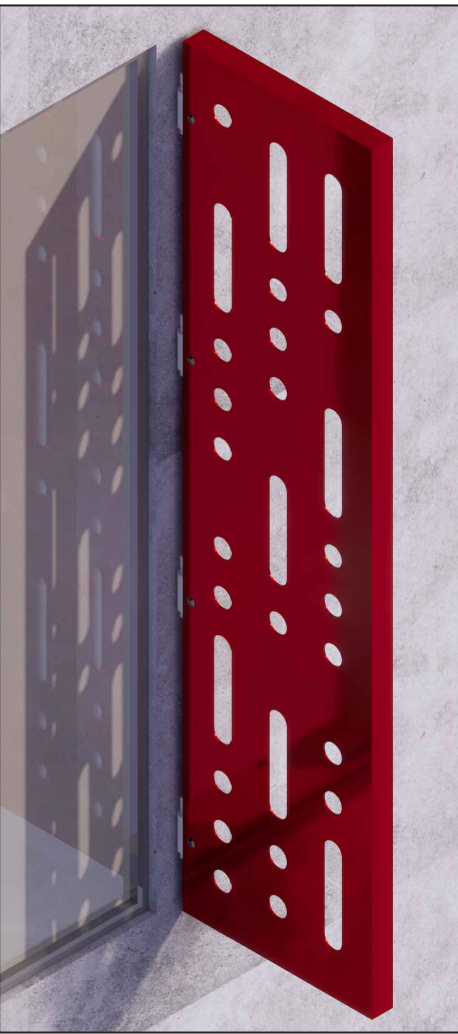


B3 - TO CONCRETE

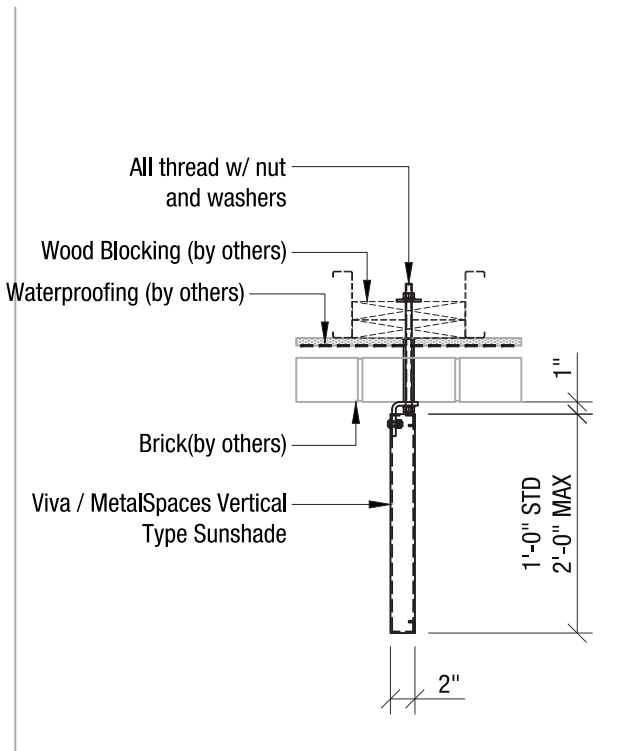
*Waterproofing as shown is for illustration purposes only, to be furnished and installed by others. VIVA will provide trade coordination support.



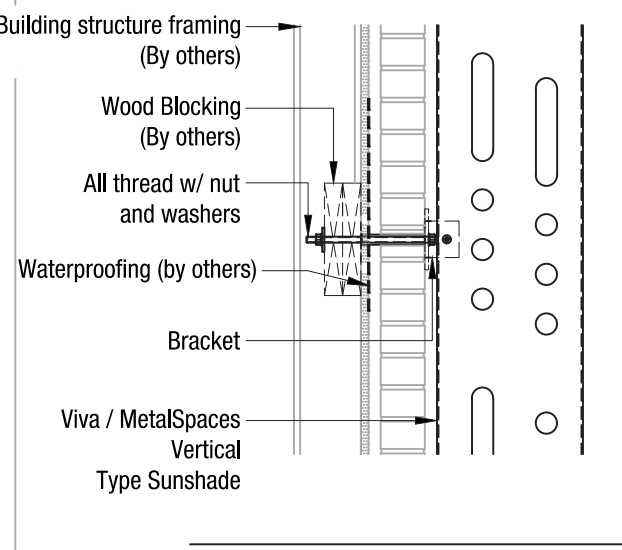
Vertical Type



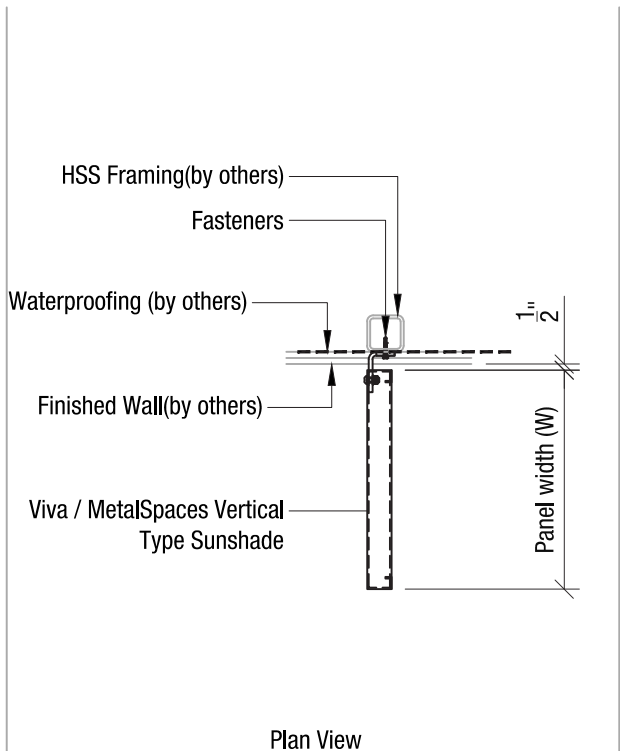
Visit <https://vivarailings.com/> for range of design patterns
Or provide your custom pattern.
Solid panels also available.



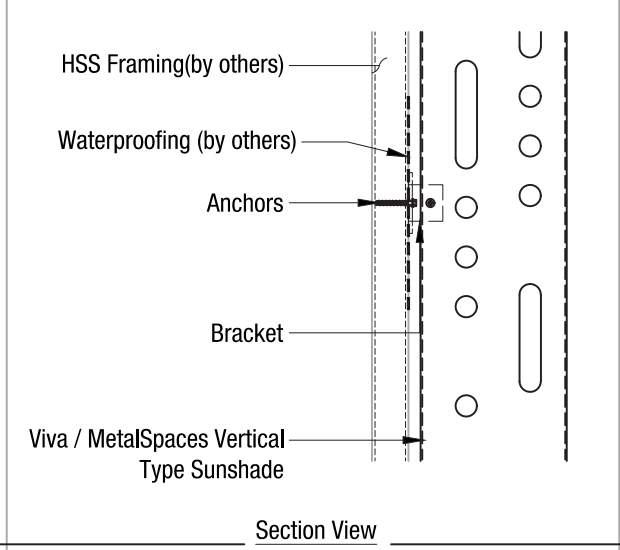
V1 - TO FRAMING



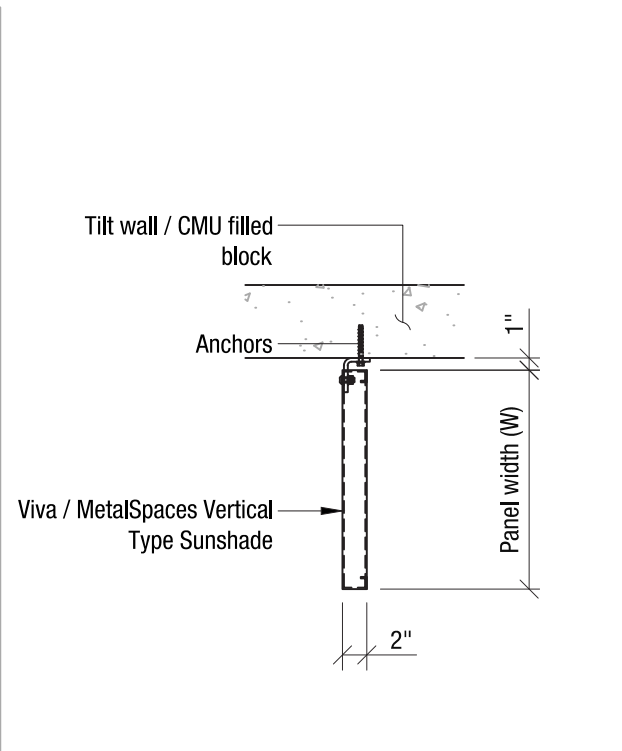
V2 - TO STEEL



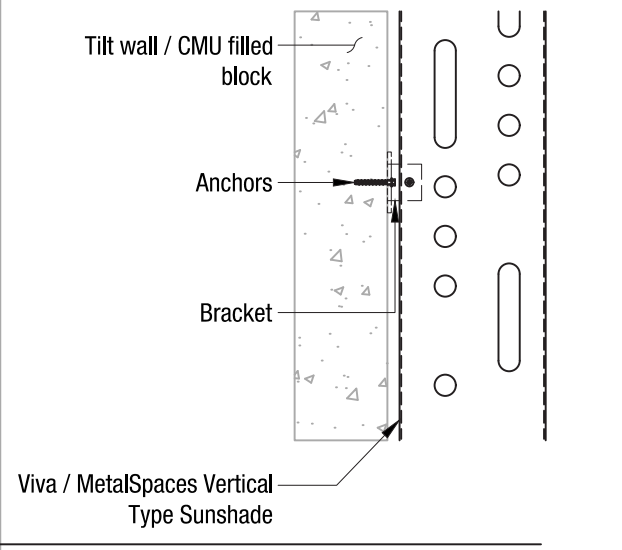
Plan View



Section View



V3 - TO CONCRETE



STANDARD DIMENSIONS WxH (in)	
12	42
18	54
24	66
	90
	114

*Waterproofing as shown is for illustration purposes only, to be furnished and installed by others. VIVA will provide trade coordination support.

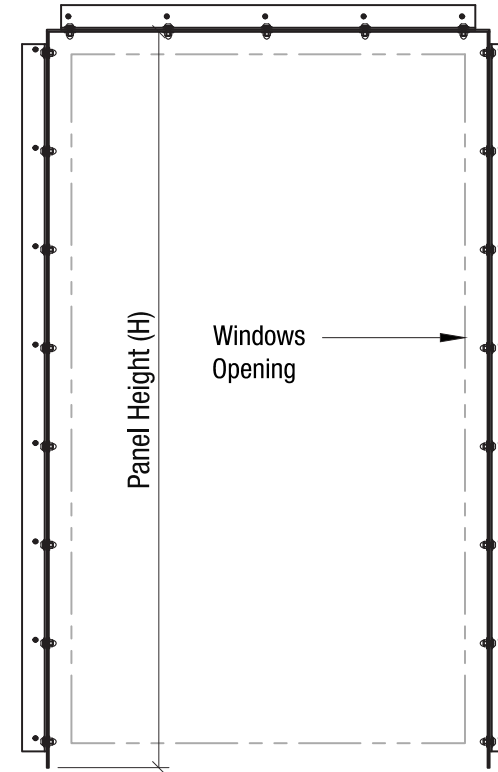
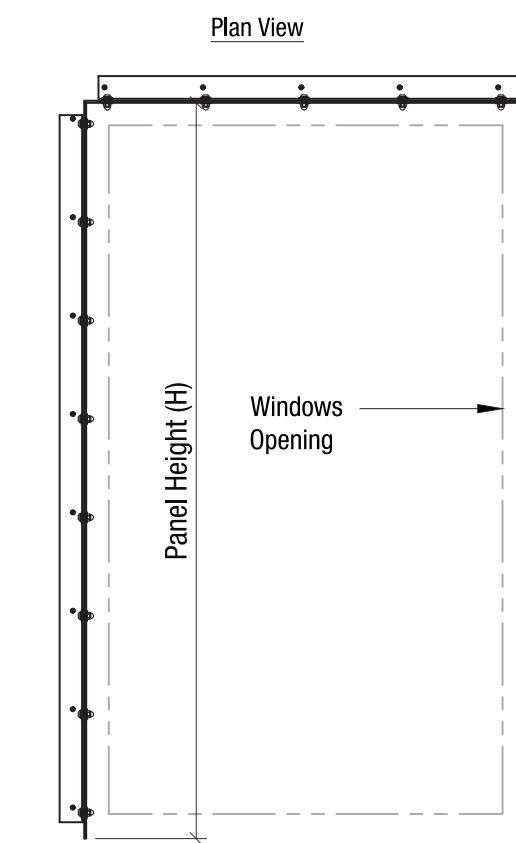
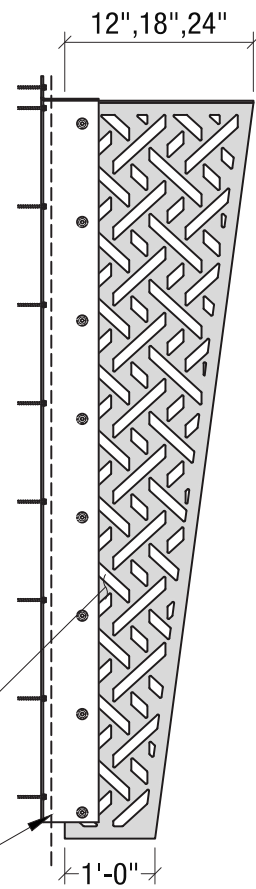
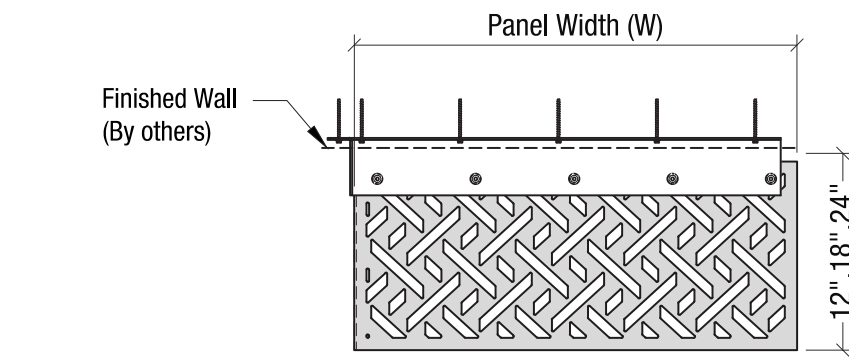


Shadow Box



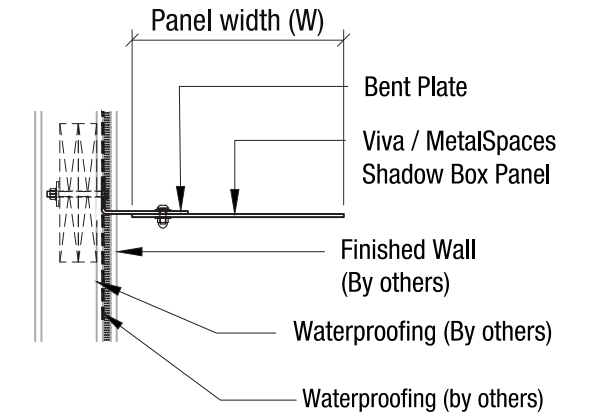
Visit <https://vivarailings.com/> for range of design patterns
Or provide your custom pattern.
Solid panels also available.

Finished Wall
(By others)

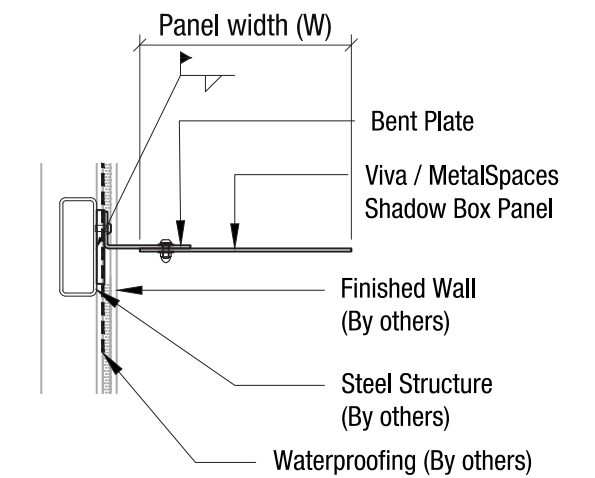


STANDARD DIMENSIONS WxH (in)

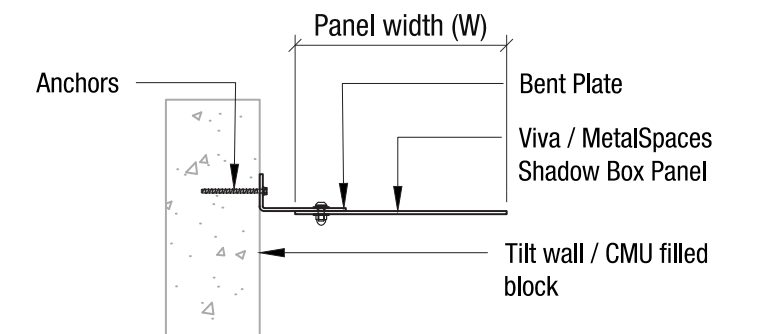
60	48
96	60
120	72
	96
	120



SB1 - TO FRAMING



SB2 - TO STEEL



SB3 - TO CONCRETE

*Waterproofing as shown is for illustration purposes only, to be furnished and installed by others. VIVA will provide trade coordination support.



Pattern Collections

Where Performance Meets Personality

At MetalSpaces, we know that Sun Control systems are more than functional barriers—they are expressive design elements that shape the identity of a space. Our curated pattern categories are tailored for wall applications requiring both aesthetic strength and technical excellence:

Primary

Crisp, modern, and minimal — these linear patterns add structure and repetition to building exteriors.

Geometric

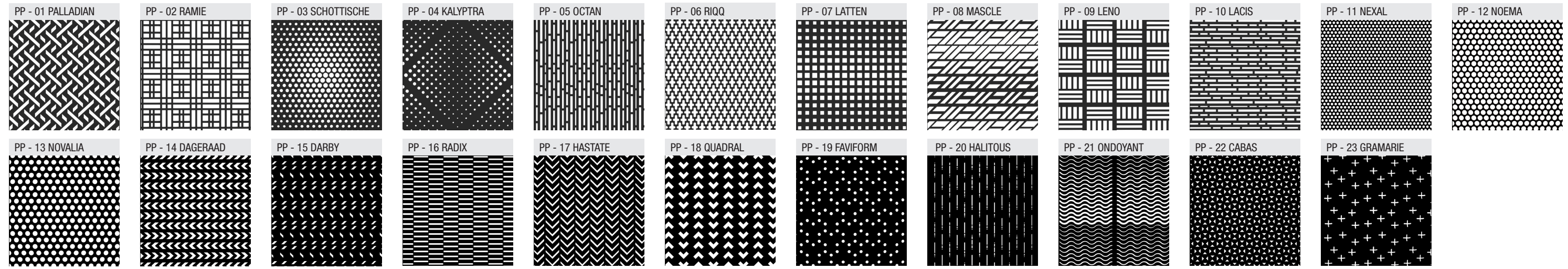
Symmetrical, tessellated designs that bring rhythm and movement to facades.

Organic

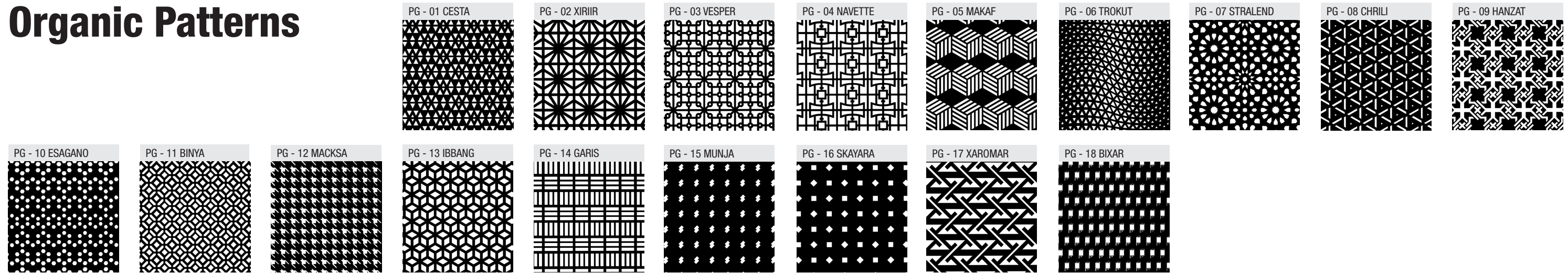
Soft, flowing forms that evoke nature. A biophilic touch in even the most urban environments.



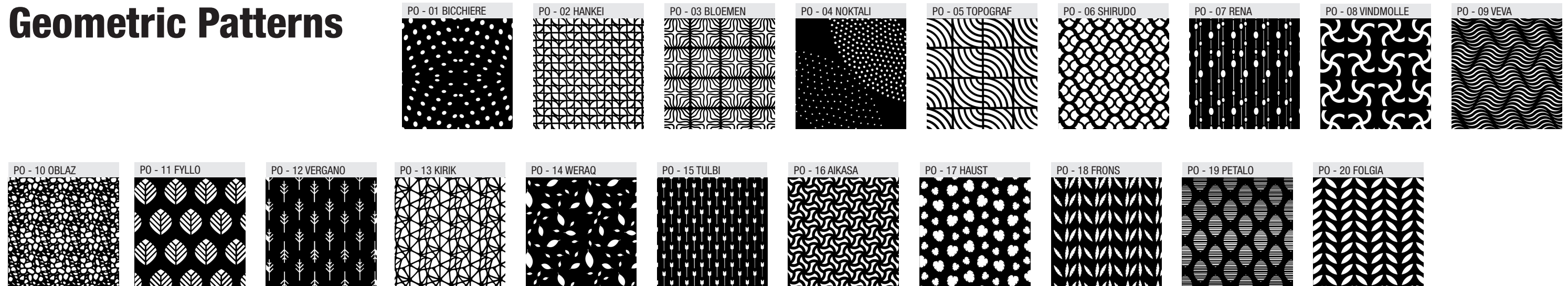
Primary Patterns



Organic Patterns



Geometric Patterns





DESIGN + ENGINEER + FABRICATE + INSTALL

151 W. Vista Ridge Mall Dr. Lewisville, TX 75067

(Dallas/Fort Worth Metroplex)

PH: 972.353.8482 | info@vivarailings.com
vivarailings.com



Inc. Magazine 500 | 5000
VIVA RAILINGS, LLC.
Among The Fastest Growing
US Companies
Eight Years in a Row
2012-2019



Inc. Magazine 500 | 5000
VIVA RAILINGS, LLC.
Among The Fastest Growing
Texas Companies
#211



ICC-ES 4405 Certified
SHOE™
Structural Glass Railing System



LEED
Material & Resources Credits 4.1 and 4.2



The American Institute of Architects



The California Contractors State License
Board Certified

