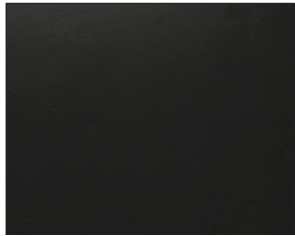
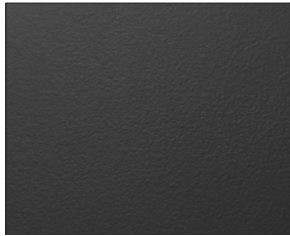


POWDER COAT - STANDARD COLORS



PC-21 SEMI GLOSS BLACK



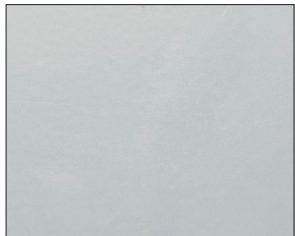
PC-22 MATTE BLACK



PC-26 DUSTY GRAY



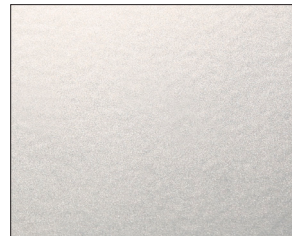
PC-27 MATTE ALUMINUM



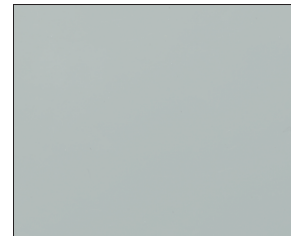
PC-28 CHROME



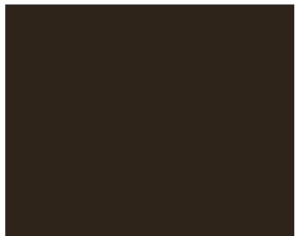
PC-29 SPARKLE SILVER



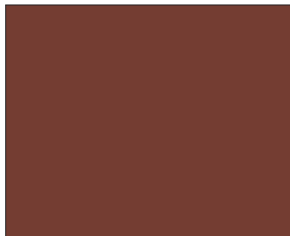
PC-30 STARDUST SILVER



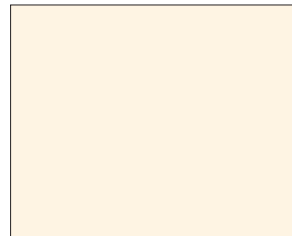
PC-31 LIGHT GRAY



PC-35 BRONZE



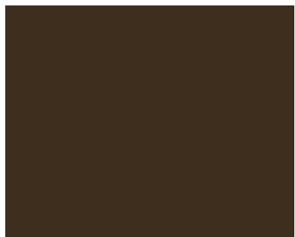
PC-36 REDWOOD



PC-37 HEIRLOOM WHITE



PC-38 COFFEE TAN



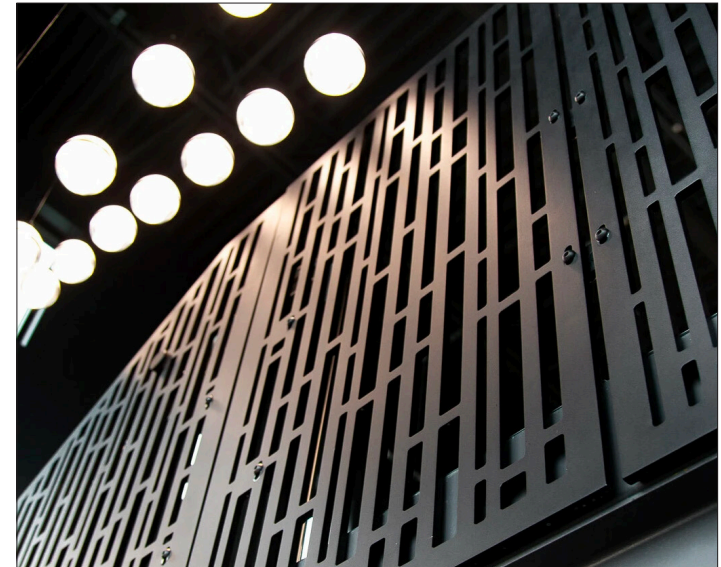
PC-39 SEPIA BROWN



PC-40 CHARCOAL GREY



PC-41 WHITE



PC-21 SEMI GLOSS BLACK AT VIVA RAILINGS HEADQUARTERS

Looking for a pop of color on your railing system?

Shown here are the standard colors available.

As in all of our railing systems, customization is always a possibility. At Viva Railings our priority is to provide products and services that match your vision.

Powder coating is an environmentally-friendly option because it doesn't rely on solvents or chemical carriers. Instead, an electrostatic charge holds the paint to the steel, thus eliminating VOC emissions which will help in regards to LEED requirements. In addition, it meets AAMA specifications.

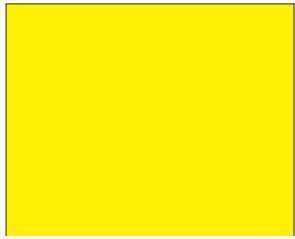
Powder coating is durable and scratch resistant so it weathers and retains its original hue better than conventional liquid coatings.

Powder coating can be applied to most of our systems.

The digital swatches of our powder coat may not accurately represent the actual real-life samples. Factors such as monitor settings, lighting conditions, and individual perception can affect the colors you see on your screen. We suggest using the swatches as a general reference for color, shade, and hue, rather than expecting an exact match. For the most precise color selection, we recommend requesting physical samples or visiting our office in Lewisville, TX to evaluate the powder coat colors in person.

Please note that while we offer a diverse range of standard powder coat colors to complement our products, any selections outside of these standard options may incur additional costs. We encourage you to consult with our specialists to explore all available options and make the best decision for your project needs.

POWDER COAT - PRIMARY COLORS



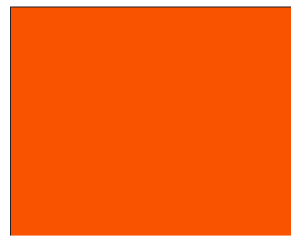
PC-50 YELLOW



PC-51 AMBER



PC-52 ORANGE



PC-53 VERMILLION



PC-54 RED



PC-55 PURPLE



PC-56 LILAC



PC-57 VIOLET



PC-58 BLUE



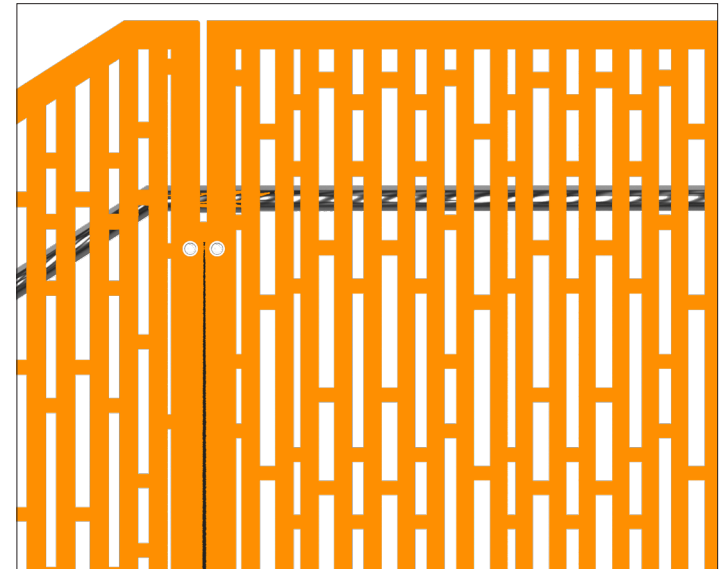
PC-59 TEAL



PC-60 GREEN



PC-61 CHARTREUSE



PC-52 ORANGE ON STRUC™ METAL PANEL RAILING SYSTEM

Enhance your space with a bold and colorful intervention.

Shown here are the standard primary colors available. As in all of our railing systems, customization is always a possibility. At VIVA Railings our priority is to provide products and services that match your vision.

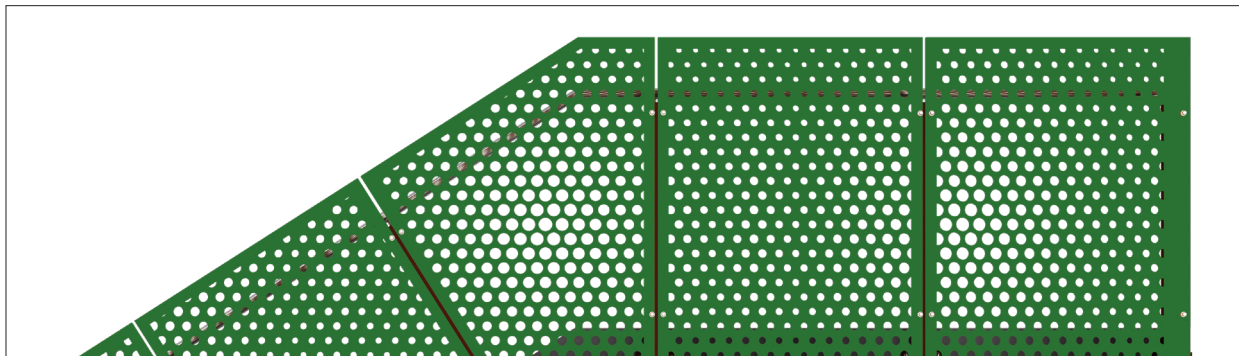
Powder coating is an environmentally-friendly option because it doesn't rely on solvents or chemical carriers. Instead, an electrostatic charge holds the paint to the steel, thus eliminating VOC emissions which will help in regards to LEED requirements. In addition, it meets AAMA specifications.

Powder coating is durable and scratch resistant so it weathers and retains its original hue better than conventional liquid coatings.

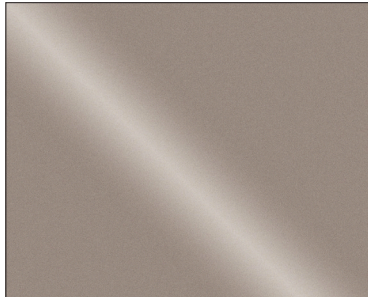
Powder coating can be applied to most of our systems.

The digital swatches of our powder coat may not accurately represent the actual real-life samples. Factors such as monitor settings, lighting conditions, and individual perception can affect the colors you see on your screen. We suggest using the swatches as a general reference for color, shade, and hue, rather than expecting an exact match. For the most precise color selection, we recommend requesting physical samples or visiting our office in Lewisville, TX to evaluate the powder coat colors in person.

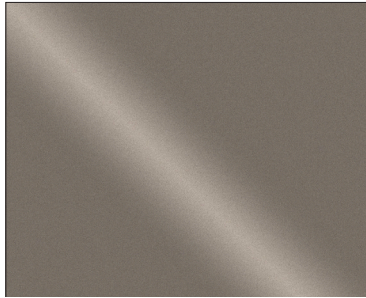
Please note that while we offer a diverse range of standard powder coat colors to complement our products, any selections outside of these standard options may incur additional costs. We encourage you to consult with our specialists to explore all available options and make the best decision for your project needs.



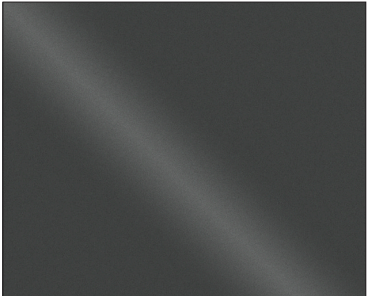
POWDER COAT - METALLIC COLORS



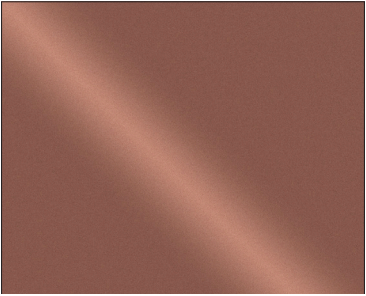
MC-70 CHAMPAGNE



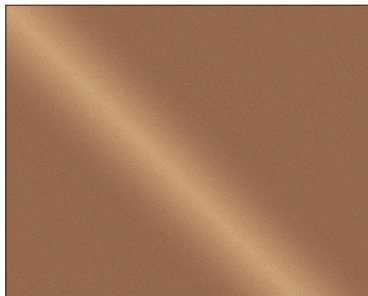
MC-71 LIGHT BRONZE



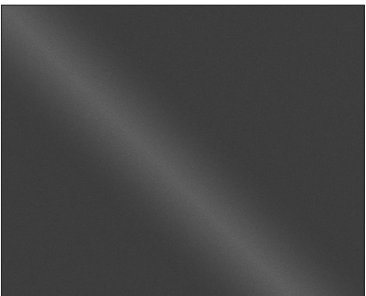
MC-72 COSMIC GRAY



MC-73 COPPER PENNY



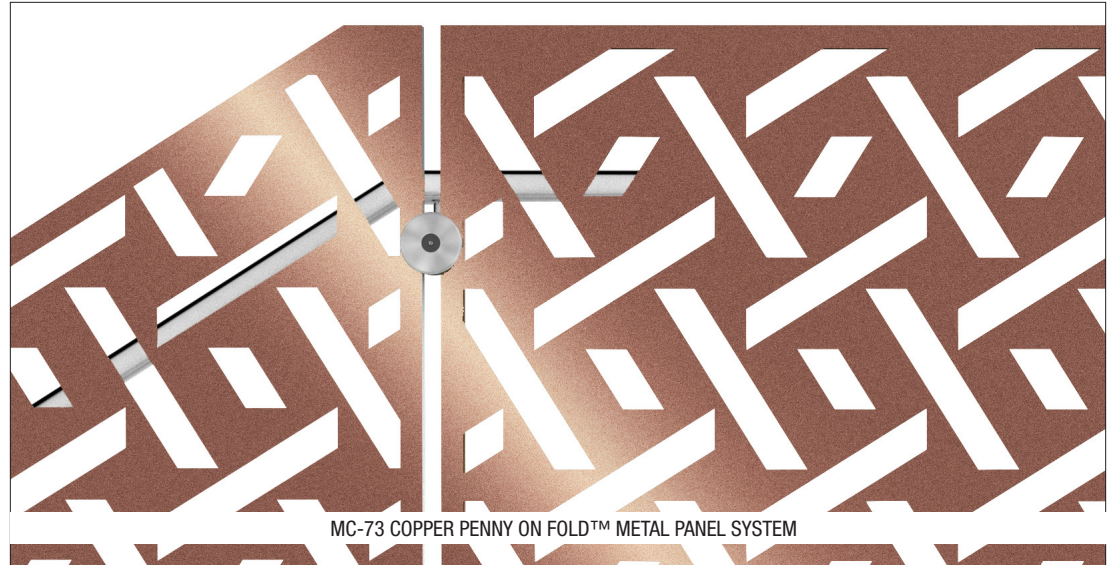
MC-74 GOLD NUGGET



MC-75 FINE TEXTURE BLACK CHROME

The digital swatches of our powder coat colors may not accurately represent the actual real-life samples. Factors such as monitor settings, lighting conditions, and individual perception can affect the colors you see on your screen. We suggest using the swatches as a general reference for color, shade, and hue, rather than expecting an exact match. For the most precise color selection, we recommend requesting physical samples or visiting our office in Lewisville, TX to evaluate the powder coat colors in person.

Please note that while we offer a diverse range of standard powder coat colors to complement our products, any selections outside of these standard options may incur additional costs. We encourage you to consult with our specialists to explore all available options and make the best decision for your project needs.



Maximize the design possibilities for your next project. Beautiful sheen with all the durability required, in a wide range of metallic colors.

Shown here are the standard metallic colors available. As in all of our railing systems, customization is always a possibility. At VIVA Railings our priority is to provide products and services that match your vision.

Powder coating is an environmentally-friendly option because it doesn't rely on solvents or chemical carriers. Instead, an electrostatic charge holds the paint to the steel, thus eliminating VOC emissions which will help in regards to LEED requirements. In addition, it meets AAMA specifications.

Powder coating is durable and scratch resistant so it weathers and retains its original hue better than conventional liquid coatings.

Powder coating can be applied to most of our systems.